

Invention in C

Kirk Hinkelman

Piano

Measures 1-3 of the piece. The treble clef staff begins with a C4 quarter note, followed by a series of eighth and sixteenth notes. The bass clef staff has a whole rest in measure 1, then enters in measure 2 with a C3 quarter note, followed by a series of eighth and sixteenth notes. The key signature is C major and the time signature is 4/4.

4

Measures 4-6. The treble clef staff continues with eighth and sixteenth notes. The bass clef staff continues with eighth and sixteenth notes. The melody in the treble clef staff moves up stepwise.

7

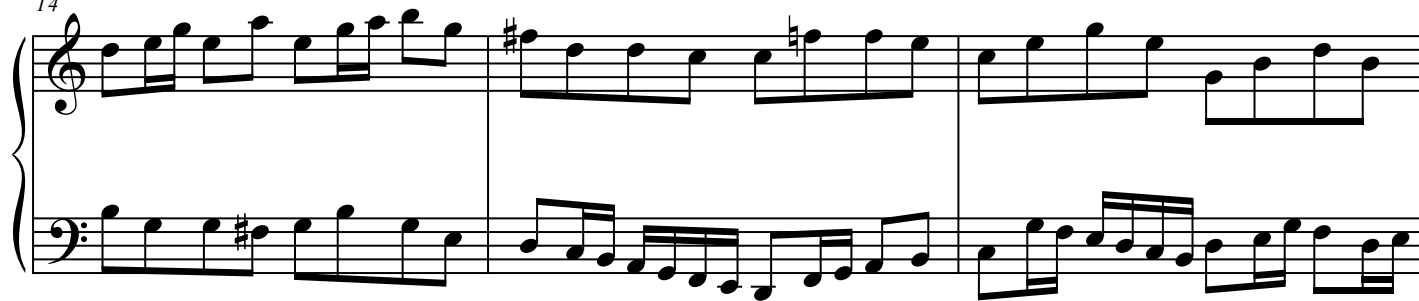
Measures 7-9. The treble clef staff continues with eighth and sixteenth notes. The bass clef staff continues with eighth and sixteenth notes. The melody in the treble clef staff moves up stepwise.

10

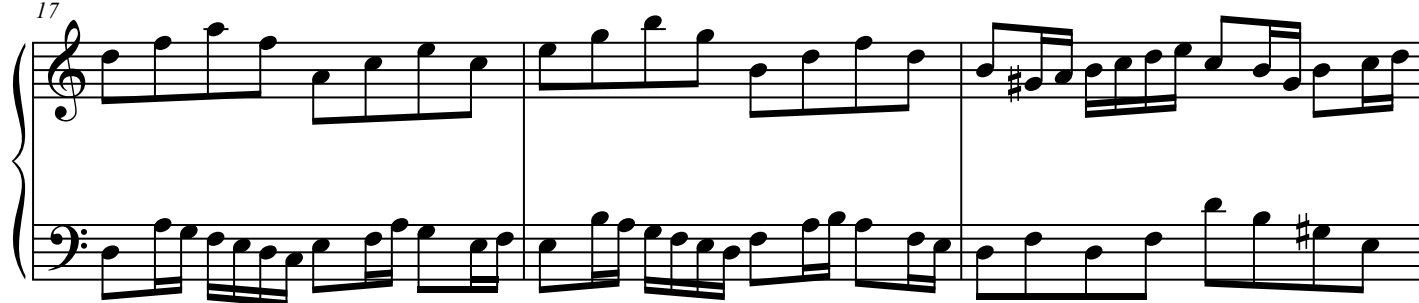
Measures 10-13. The treble clef staff continues with eighth and sixteenth notes. The bass clef staff continues with eighth and sixteenth notes. The melody in the treble clef staff moves up stepwise. Measure 11 contains a sharp sign (#) above the staff, indicating a key change to C# major.

2
14

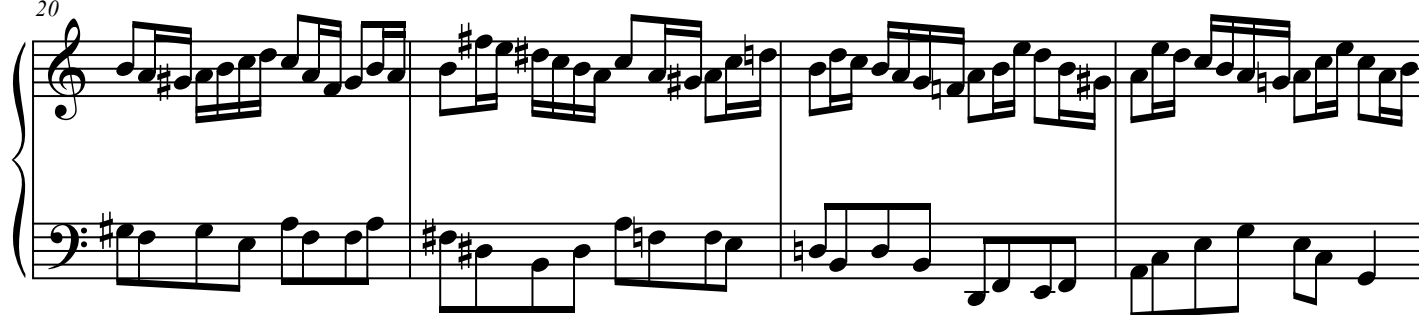
Invention in C



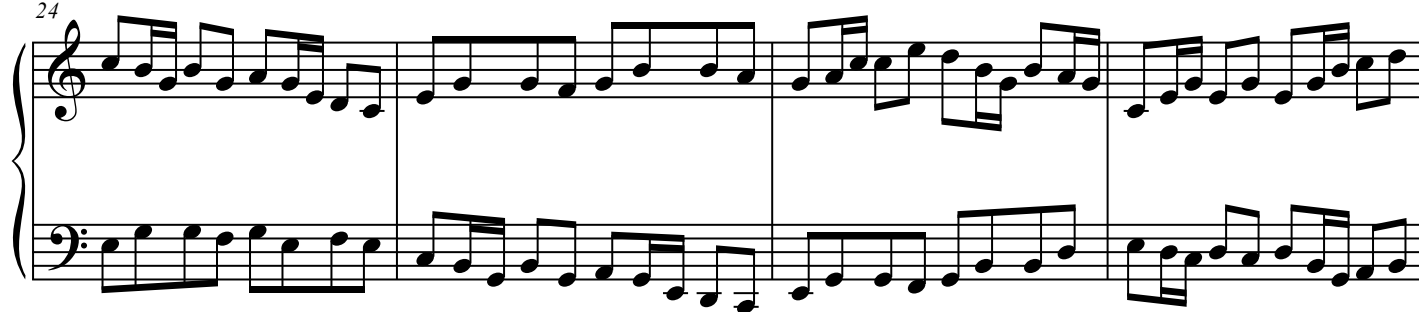
17



20



24



28

